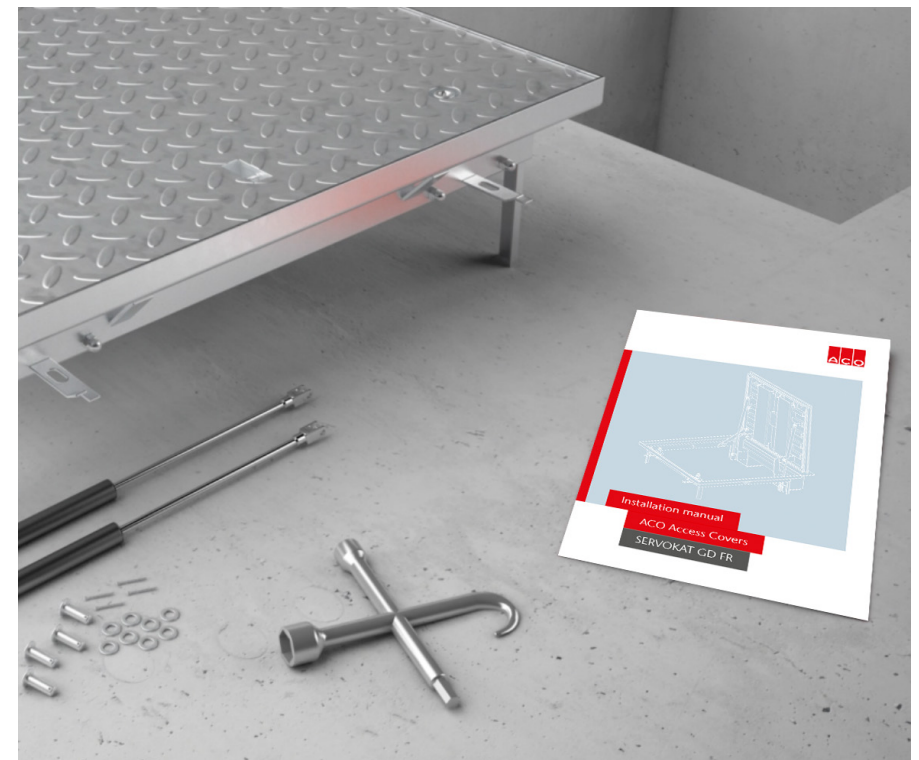
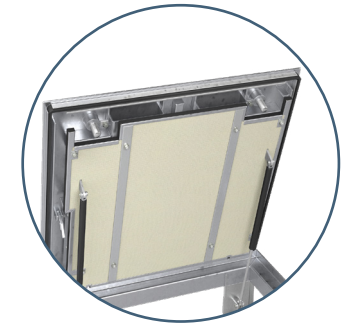


Installation manual

ACO Access Covers

SERVOKAT GD FR

- | | | | |
|------------|--|------------|--|
| ENG | Installation Manual
ACO Access Cover | EST | Paigaldusjuhend |
| GER | Installationsanleitung
ACO Schachtabdeckungen | LAV | Uzstādīšanas instrukcija
ACO Tehnisko lūku vāki |
| FRA | Instructions d´installation | LIT | Montavimo instrukcija
ACO apžiūros liukai |
| ESP | Manual De Instalación
ACO Tapas de registro | POL | Instrukcja montażu |
| POR | Manual de Instalação | BUL | Инструкции за инсталация |
| ITA | Manuale d´installazione
ACO Access Cover | HUN | Beépítési útmutató |
| NLD | Installatiehandleiding
ACO Toegangsluiken | RUM | Instructiuni de instalare |
| CZE | Instalační manuál | HRV | Upute za ugradnju |
| RUS | Инструкция По Установке | SLV | Navodila za vgradnjo |
| SWE | Installationsanvisning | SRP | Preporuka za ugradnju |
| NOR | Installasjons Manual | TUR | ACO Müdahale Kapakları |
| FIN | Asennusohje | | |
| DAN | Installationsvejledning | | |



ACO Access Covers SERVOKAT GD FR

Load class B 125

Order information – Galvanised steel

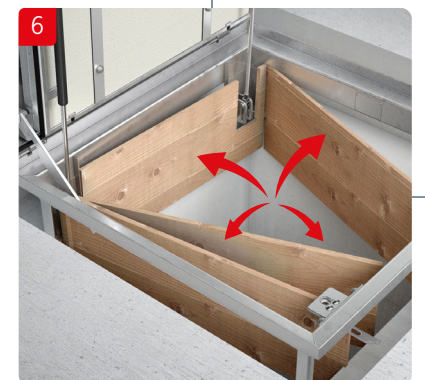
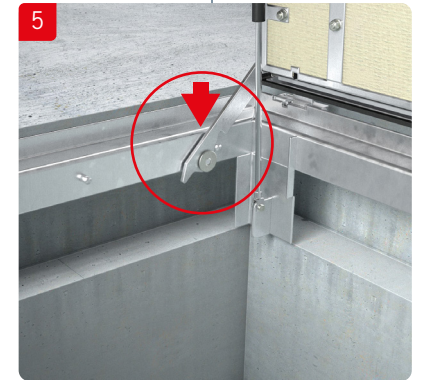
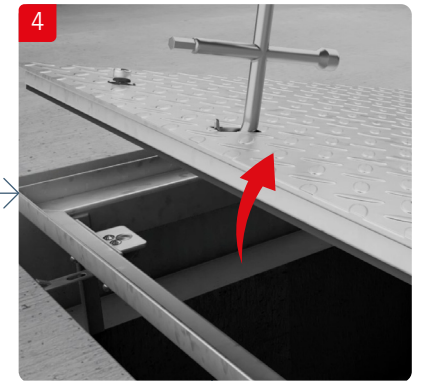
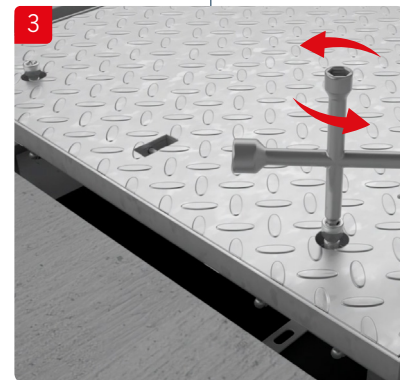
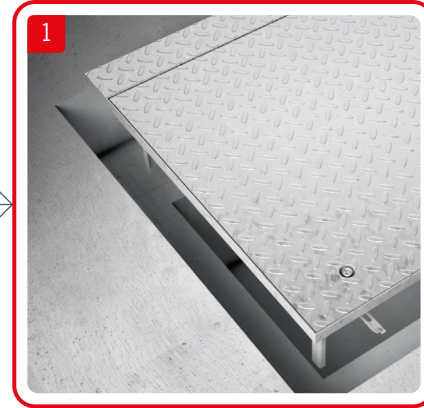
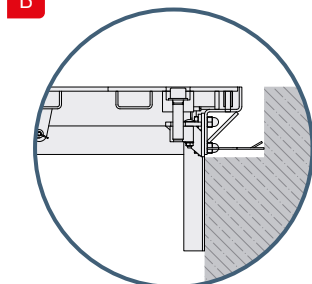
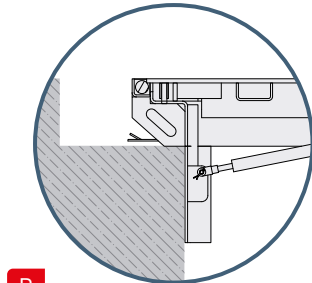
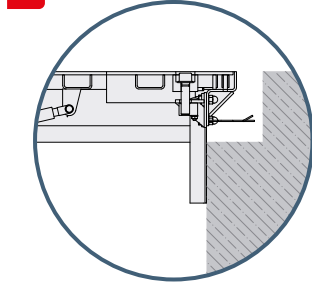
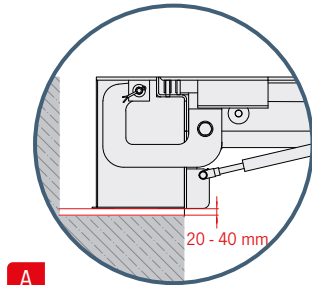
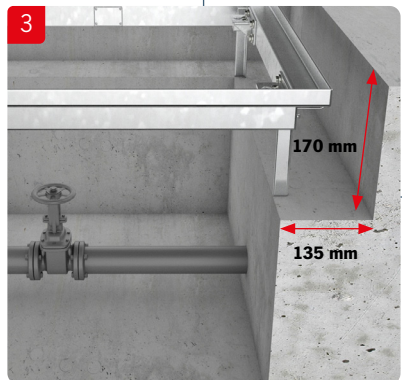
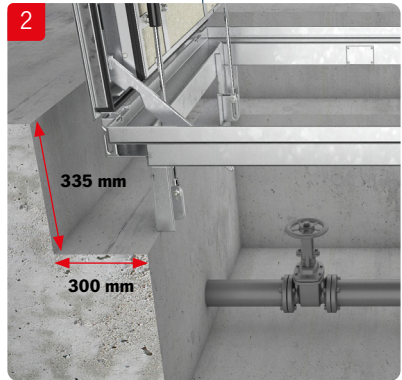
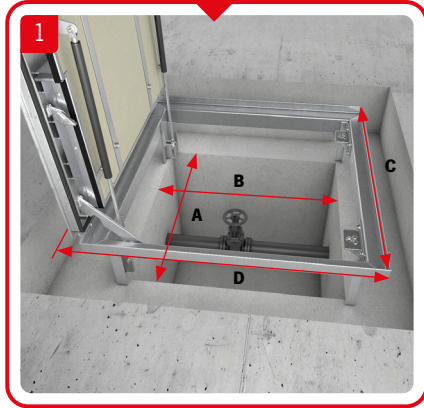
Clear opening (A x B)	External dimensions (C x D)	Frame height [mm]	Load class (EN 253)	Weight [kg]	E	EI	Lock type	Lock type
							NORMAL	EMERGENCY EXIT
[mm]	[mm]	[mm]		[kg]			Part No.	Part No.
600x800	744x944	130	B125	132.2	E120	EI60	448168	–
600x800	744x944	130	B125	138.3	E120	EI60	–	448171
800x800	944x944	130	B125	160.6	E120	EI60	448158	–
800x800	944x944	130	B125	166.7	E120	EI60	–	448162
800x1000	944x1144	130	B125	181.9	E120	EI60	448167	–
800x1000	944x1144	130	B125	188	E120	EI60	–	448173
1000x1000	1144x1144	130	B125	217.2	E120	EI60	448159	–
1000x1000	1144x1144	130	B125	223.3	E120	EI60	–	448169

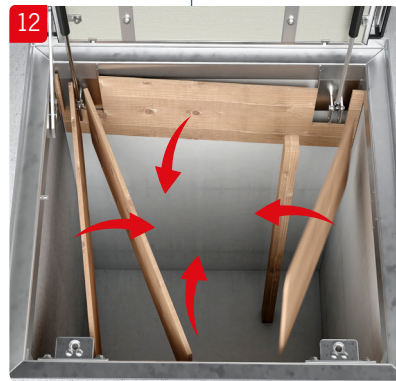
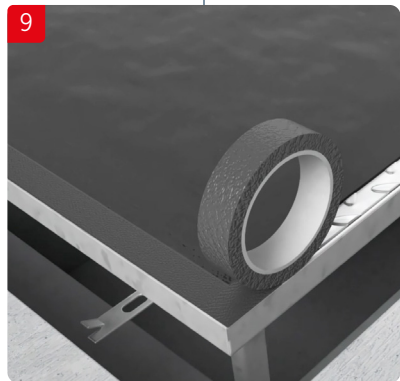
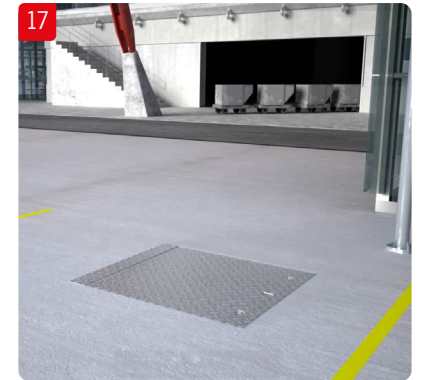
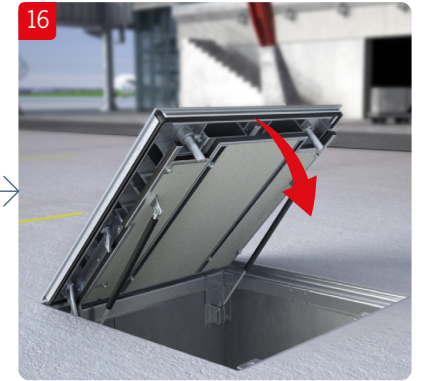
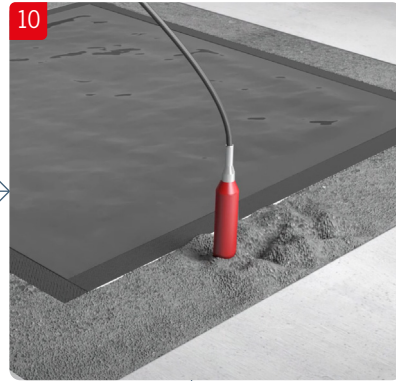
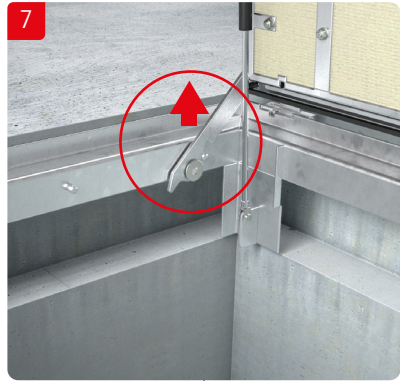
Load class D 400

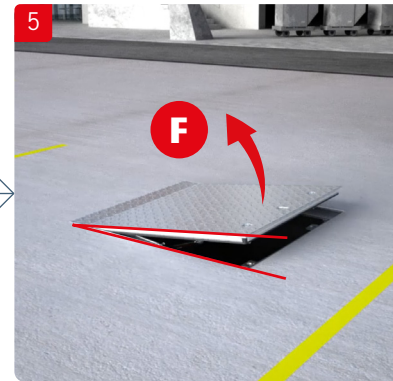
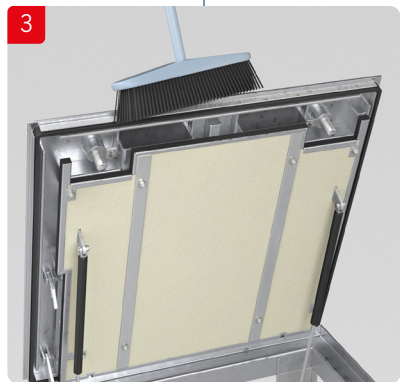
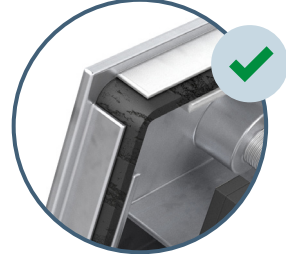
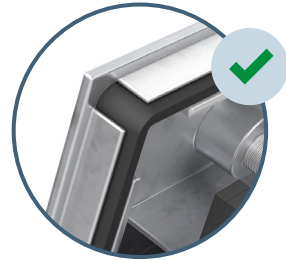
Order information – Galvanised steel

Clear opening (A x B)	External dimensions (C x D)	Frame height [mm]	Load class (EN 253)	Weight [kg]	E	EI	Lock type	Lock type
							NORMAL	EMERGENCY EXIT
[mm]	[mm]	[mm]		[kg]			Part No.	Part No.
600x800	744x944	130	D400	141.8	E120	EI60	448190	–
600x800	744x944	130	D400	147.9	E120	EI60	–	448195
800x800	944x944	130	D400	172	E120	EI60	448179	–
800x800	944x944	130	D400	178.2	E120	EI60	–	448184
800x1000	944x1144	130	D400	196.7	E120	EI60	448192	–
800x1000	944x1144	130	D400	202.8	E120	EI60	–	448188
1000x1000	1144x1144	130	D400	235.9	E120	EI60	448180	–
1000x1000	1144x1144	130	D400	242	E120	EI60	–	448182

Notes:







F ≤ 25 kg ✓
F > 25 kg ✗

ACO products support the ACO System Chain



- ACO Access Covers UNIFACE
Fire Resistance (FR)
- ACO Access Covers PAVING
Fire Resistance (FR)
- ACO Access Covers SOLID
Fire Resistance (FR)
- ACO Access Covers SERVOKAT GD
Fire Resistance (FR)



ACO Industries k.s.

Havlickova 260
582 22 Pribyslav
Czech Republic

www.aco-accesscovers.com